



*Free Crochet Pattern*

**LION BRAND® WOOL-EASE® THICK & QUICK®**

# **LITTLE LOVE PULLOVER**

Pattern Number: M20433 WETQ



## SKILL LEVEL – INTERMEDIATE

### SIZES

12 months (18 months, 24 months)

**Sizing note:** Sizes 18 and 24 months have the same chest measurement, size 24 months is longer.

**Finished Chest** About 20 (22, 22) in. (51 (56, 56) cm)

**Finished Length** About 9 1/2 (10, 10 1/2) in. (24 (25.5, 26.5) cm)

**Note:** Pattern is written for smallest size with changes for larger sizes in parentheses. When only one number is given, it applies to all sizes. To follow pattern more easily, circle all numbers pertaining to your size before beginning.

### MATERIALS

- LION BRAND® WOOL-EASE® THICK & QUICK® (Art. #640)  
#099 Fisherman 1 (1, 2) ball(s) (A)  
#615 Spice Market 1 (1, 1) ball (B)
- LION BRAND® crochet hook size Q-19 (15 mm)
- LION BRAND® stitch markers
- LION BRAND® large-eyed blunt needle



### GAUGE

8 sc = about 5 1/4 in. (13.5 cm); 8 rows = about 4 in. (10 cm).

5 hdc + 6 rows = about 4 1/2 in. (11.5 cm).

**BE SURE TO CHECK YOUR GAUGE.**

### STITCH EXPLANATIONS

**sc-blo (single crochet in back loop only)** Insert hook in back loop only of indicated st and draw up a loop, yarn over and draw through 2 loops on hook.

**sc2tog (sc 2 sts together)** (Insert hook in next st and draw up a loop) twice, yarn over and draw through all 3 loops on hook – 1 st decreased.

### NOTES

1. Pullover is worked in 4 pieces: Front, Back, and 2 Sleeves.
2. Each piece begins with a lower ribbed band. Stitches are then worked along one long edge of band to begin the body.
3. Ribbing is worked around neck edge after shoulders are seamed.
4. Yarn color is changed following the chart to create a Heart on Front of Pullover.

For thousands of free patterns, visit our website [www.LionBrand.com](http://www.LionBrand.com)

To order visit our website [www.lionbrand.com](http://www.lionbrand.com) or call: (800) 258-YARN (9276) any time!

Copyright ©1998-2021 Lion Brand Yarn Company, all rights reserved. No pattern or other material may be reproduced -- mechanically, electronically, or by any other means, including photocopying - without written permission of Lion Brand Yarn Company.

5. To change yarn color, work last st of old color to last yarn over. Yarn over with new color and draw through all loops on hook to complete st. Proceed with new color. Do not fasten off old color. Drop yarn color not in use to WS of piece and pick it up again in the next row.
6. You'll need to use a separate ball of yarn for each section of color. If needed, wind yarn into separate smaller balls before beginning.

## **BACK**

With A, ch 4.

### ***Lower Ribbing***

**Row 1:** Sc in 2nd ch from hook and in each ch across – 3 sc.

**Rows 2-15 (17, 17):** Ch 1, turn, sc-blo in first 2 sts, sc in last st.

*Do not fasten off.*

### ***Body***

**Row 1:** Ch 1, do not turn, sc in end of each row along long edge of ribbing – 15 (17, 17) sc.

**Rows 2-16 (17, 18):** Ch 1, turn, sc in each st across.

*Fasten off.*

## **FRONT**

With A, ch 4.

### ***Lower Ribbing***

Work lower ribbing as for Back.

*Do not fasten off.*

### ***Body***

**Row 1:** Ch 1, do not turn, sc in end of each row along long edge of ribbing – 15 (17, 17) sc.

**Next 1 (1, 2) Rows:** Ch 1, turn, sc in each st across.

### ***Charted Heart Pattern***

**Row 1 (RS):** With A, ch 1, turn, sc in first 3 (4, 4) sts; sc in next 9 sts and change yarn color following Row 1 of Chart, place a marker in the first and last st of the 9 sts just made; with A, sc in each st to end of row.

Move markers up as each row is completed.

**Rows 2-9:** With A, ch 1, turn, sc in each st to first marked st; sc in next 9 sts and change yarn color following next row of Chart; with A, sc in each st to end of row.

*Fasten off B.*

Work remainder of piece with A only.

**Next 1 (2, 2) Rows:** Ch 1, turn, sc in each st across.

### ***Shape First Shoulder***

**Row 1:** Ch 1, turn, sc in first 5 sts; leave remaining sts unworked for front neck and second shoulder – 5 sc.

**Row 2:** Ch 1, turn, sc2tog, sc in last 3 sts – 4 sc.

**Row 3:** Ch 1, turn, sc in first 2 sts, sc2tog – 3 sc.

For thousands of free patterns, visit our website [www.LionBrand.com](http://www.LionBrand.com)

To order visit our website [www.lionbrand.com](http://www.lionbrand.com) or call: (800) 258-YARN (9276) any time!

Copyright ©1998-2021 Lion Brand Yarn Company, all rights reserved. No pattern or other material may be reproduced -- mechanically, electronically, or by any other means, including photocopying - without written permission of Lion Brand Yarn Company.

**Row 4:** Ch 1, turn, sc in each st across.

*Fasten off.*

### ***Shape Second Shoulder***

**Row 1:** Sk next 5 (7, 7) unworked sts of body following Row 1 of first shoulder, join A with sc in next st, sc in each st to end of row – 5 sc.

**Row 2:** Ch 1, turn, sc in first 3 sts, sc2tog – 4 sc.

**Row 3:** Ch 1, turn, sc2tog, sc in last 2 sts – 3 sc.

**Row 4:** Ch 1, turn, sc in each st across.

*Fasten off.*

## **SLEEVES (make 2)**

### ***Cuff***

With B, ch 4.

**Row 1:** Sc in 2nd ch from hook and in each ch across – 3 sc.

**Row 2:** Ch 1, turn, sc-blo in first 2 sts, sc in last st.

Rep Row 2 until cuff measures about 4 (4, 4 1/2) in. (10 (10, 11.5)) cm.

*Do not fasten off.*

### ***Shape Sleeve***

**Row 1:** Ch 1, do not turn, sc in end of each row along long edge of cuff.

**Row 2:** Ch 2 (does not count as a st), turn, 2 hdc in first st, hdc in each st across.

**Rows 3 and 4:** Ch 2 (does not count as a st), turn, hdc in each st across.

Rep Rows 2-4 until you have 10 (10, 11) sts.

**Next Row:** Ch 2 (does not count as a st), turn, hdc in each st across.

Rep last row until piece measures about 8 (8 1/2, 9) in. (20.5 (21.5, 23) cm) from beg.

*Fasten off.*

## **FINISHING**

Sew shoulder seams.

Place markers on side edges of Front and Back, about 4 (4, 4 1/2) in. (10 (10, 11.5) cm) down from shoulder seam.

Sew Sleeves between markers.

Sew side and Sleeve seams.

### ***Neck Ribbing***

From RS, join A with sl st at back neck edge, so that you are ready to work along back neck, ch 3.

**Row 1:** Sc in 2nd ch from hook and in next ch, sl st in next 2 sts of neck edge – 2 sc and 2 sl sts.

**Row 2:** Turn, sk the sl sts, sc-blo in next sc, sc in last sc – 2 sc.

**Row 3:** Ch 1, turn, sc-blo in first sc, sc in last sc, sl st in next 2 sts of neck edge – 2 sc and 2 sl sts.

For thousands of free patterns, visit our website [www.LionBrand.com](http://www.LionBrand.com)

To order visit our website [www.lionbrand.com](http://www.lionbrand.com) or call: (800) 258-YARN (9276) any time!

Copyright ©1998-2021 Lion Brand Yarn Company, all rights reserved. No pattern or other material may be reproduced -- mechanically, electronically, or by any other means, including photocopying - without written permission of Lion Brand Yarn Company.

Rep Rows 2 and 3 all the way around neck edge.

*Fasten off, leaving a long yarn tail.*

Thread tail into blunt needle and sew first row of ribbing to last row of ribbing.

*Weave in ends.*

## **ABBREVIATIONS**

**beg** = begin(ning)(s)

**ch** = chain

**hdc** = half double crochet

**rep** = repeat

**RS** = right side

**sc** = single crochet

**sk** = skip

**sl st** = slip stitch

**st(s)** = stitch(es)

**WS** = wrong side

*Every effort has been made to produce accurate and complete instructions. We cannot be responsible for variance of individual knitters or crocheters, human error, or typographical mistakes.*

*©2021 Lion Brand Yarn Company, all rights reserved.*

For thousands of free patterns, visit our website [www.LionBrand.com](http://www.LionBrand.com)

To order visit our website [www.lionbrand.com](http://www.lionbrand.com) or call: (800) 258-YARN (9276) any time!

Copyright ©1998-2021 Lion Brand Yarn Company, all rights reserved. No pattern or other material may be reproduced -- mechanically, electronically, or by any other means, including photocopying - without written permission of Lion Brand Yarn Company.

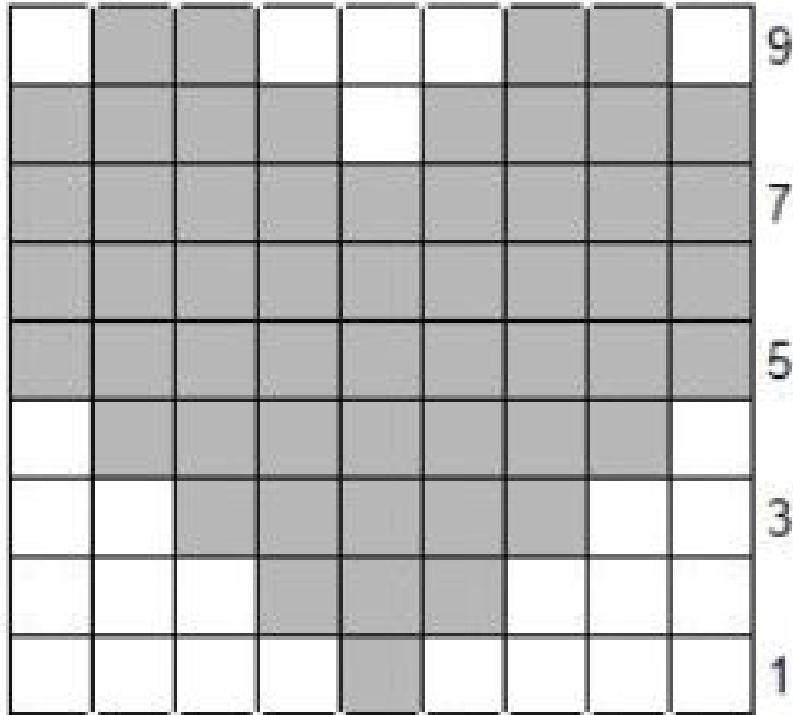


Chart is 9 sts wide

